



THE EAGLE 52



THE EAGLE 52 Model number: 34EGL28523AH18
3 beds • 2 baths • 1456 sq.ft. • 28' width • 52' depth

Our home building facilities invest in continuous product and process improvements. Plans, dimensions, features, materials, specifications and availability are subject to change without notice or obligation. Renderings and floor plans are representative likenesses of our homes and may differ from the actual homes. We invite you to tour a Home Center near you and inspect the highest value in quality housing available or call (859) 498-7725 to speak with a Home Consultant. Copyright 2017, CMH. All rights reserved.

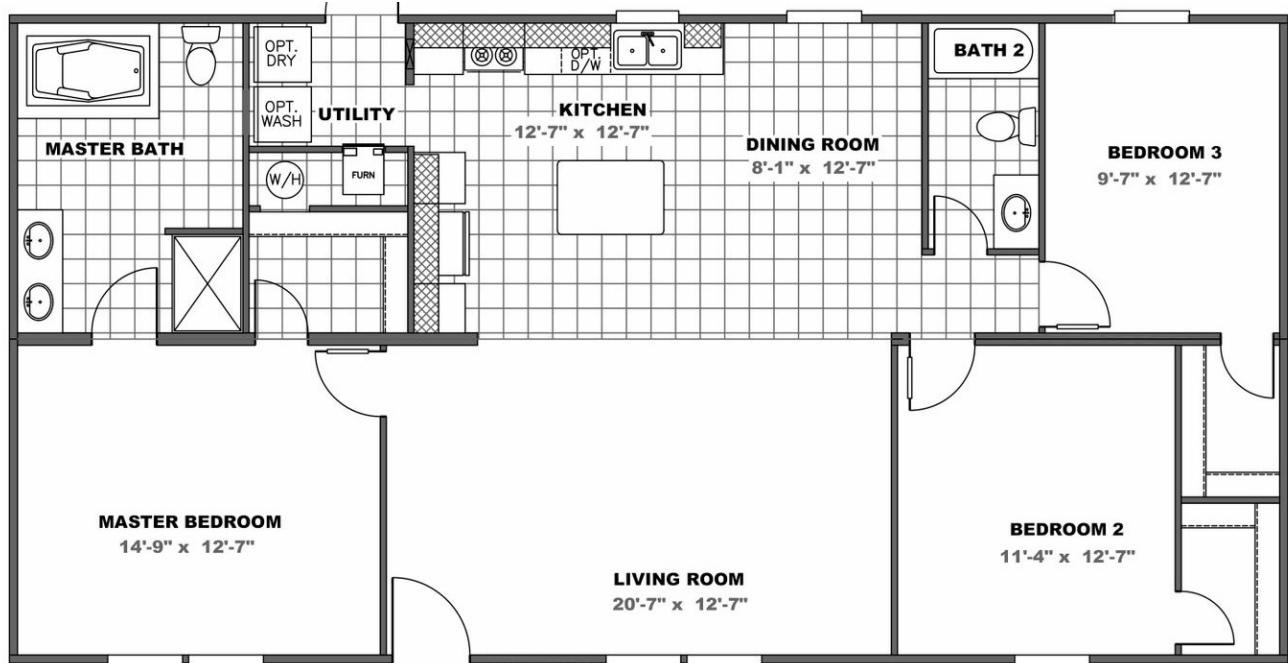
<https://www.freedomofmtsterling.com>

**FREEDOM HOMES-MT.
STERLING**

**1011 MAYSVILLE ROAD
MOUNT STERLING, KY 40353**

Monday - Thursday: 9am - 7pm
Friday: 9am - 6pm
Saturday: 9am - 5pm
Sunday: Closed

(859) 498-7725



THE EAGLE 52 Model number: 34EGL28523AH18

3 beds • 2 baths • 1456 sq.ft. • 28' width • 52' depth

Our home building facilities invest in continuous product and process improvements. Plans, dimensions, features, materials, specifications and availability are subject to change without notice or obligation. Renderings and floor plans are representative likenesses of our homes and may differ from the actual homes. We invite you to tour a Home Center near you and inspect the highest value in quality housing available or call (859) 498-7725 to speak with a Home Consultant. Copyright 2017, CMH. All rights reserved.

<https://www.freedomofmtsterling.com>

**FREEDOM HOMES-MT.
STERLING**

**1011 MAYSVILLE ROAD
MOUNT STERLING, KY 40353**

Monday - Thursday: 9am - 7pm
Friday: 9am - 6pm
Saturday: 9am - 5pm
Sunday: Closed

(859) 498-7725